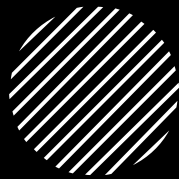


# CT Workers Summit

Pastor Lola Oyesanmi





# Agenda

- Opening Prayer
- Ice-breaker
- Pastor's Training
- Break
- Workers Manual Introduction
- Requirements of Church Workers
- Stewardship
- Dress Code
- Short Break
- Communication Skills
- Punctuality & Accountability
- Team Building Exercise
- Team Leaders Pitch
- Closing Prayer





# Introduction

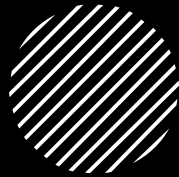
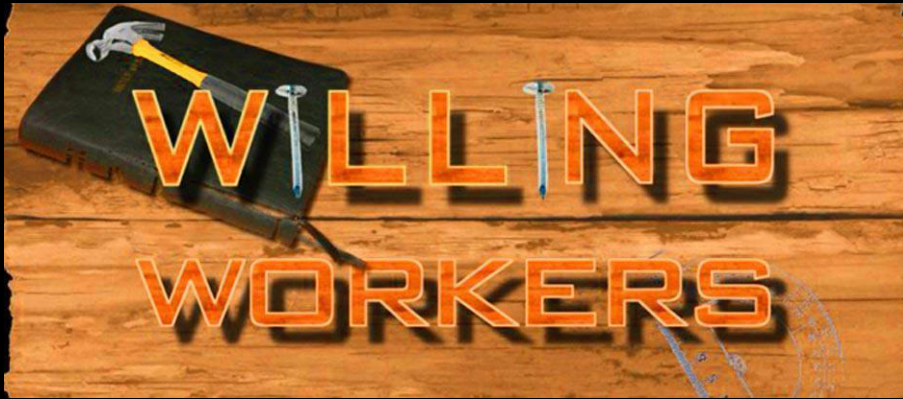
- “Run with the vision”
- People skills: members and newcomers
- "All things must be done, decently and in order“
- "Home away from Home".
- The Lord Jesus commissioned us in Matthew 28:19 to "Go ye therefore and teach all nations, baptizing them in the name of the Father, and of the son, and of the Holy Ghost".
- Therefore let us be burdened with winning souls for the Kingdom of God and making them disciples indeed.





## Requirements

- Workers must be born again and must be professing Christians. That is, unashamed to boldly declare their faith in Jesus Christ.
- All workers must be constantly developing and improving their personal daily relationship with the Lord.
- Communication between workers should neither be unclear nor passive, but rather plain and direct. Workers must endeavor at all times to speak the truth in love, decently and strive to be accommodating, compassionate and yet forthright. **Please do not communicate subliminally or indirectly.**



## Requirements pt. 2

- Every worker should have a clear understanding of their calling as it relates to their specific department.
- Every worker must strive to develop a Godly relationship with Leadership, team members, and members of the church at large.
- Due to the multicultural composition of this church, the scripture must be held as the acceptable culture. Therefore each worker must ensure they are not subjected to any other culture but the Word of God.
- Workers must embrace the vision of the house, live it, possess it and happily proclaim it.

# Requirements pt. 3



- As workers we must endeavor to work tirelessly for the progress of the vision of the house.
- In the event of any disagreements or mishaps, each worker must be committed to solving the problem rather than aggravating the issue. The Bible commands us to strive for peace at all times.
- **Workers are expected to be at the pre-service prayers and weekly workers meeting.** It is very important for us to be in spiritual harmony and be spiritually prepared to serve, minister to God's people and fully engage in the service. These 2 sessions are also made available on Live stream and available for replay.
- **Punctuality is required of Workers at all church meetings and services. This cannot be overemphasized.**
- Personal Hygiene

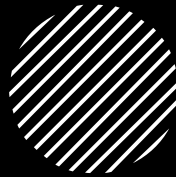




# Stewardship

- A steward is a person entrusted with another's property. As Christians we should always remember that God gave us all that we have (John 3:27). We are His stewards and we are expected to be faithful in stewardship.
- PRINCIPLES OF BIBLICAL STEWARDSHIP
- Whatever we have still belongs ultimately to God (Mat. 25:14)
- God will not give us more than we can handle (Vs. 15)
- We will give account of our stewardship. (Vs. 19)
- Faithfulness in little things results in promotion. (Vs. 21, Luke 16:10-12)
- Lack of faithfulness results in the making of excuses. (VS. 24)
- The unfaithful steward is regarded as wicked and lazy. (Vs. 26)
- God will take opportunities from the unfaithful and give them to the faithful. (Vs. 28-29)
- Every unfaithful steward will end up in regret. (Vs. 28-30)
- God wants us to be productive and profit-oriented. (Vs. 30)



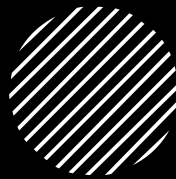


# Stewardship pt. 2

- AREAS OF STEWARDSHIP
- Our Finances - God expects us to do the following with our finances:
- Give Tithes and Offerings. (Mal. 3:8-10)
- Sustain and support our families. (1 Tim. 5:8)
- Support special projects in the church. (Ex. 25:1-8)
- Give to men of God. - Prophet Offering (Luke 8:1-3, Gal. 6:6)
- Give to the poor. (Proverb. 28:27, Eph. 4:28)
- Invest your money wisely (Stocks, shares and others as deemed fit)
- Our Gifts - (1 Peter 4:10)- We should serve God with our natural gifts. Ex. 31:2-5.
- We should also serve others with our spiritual gifts. (Rom. 12:6-7)
- Our Time - (Eph. 5:16)- Our time is our life - the asset God gave to each of us in equal measure.
- It is measured to us to fulfill God's purpose. (Eccl. 3:1, Ps. 90:12)
- We should not spend our time but invest it wisely. We must buy up opportunities.
- Our Bodies- We should give our bodies to God to use. (Rom. 6:12-13, Rom. 12:1)
- We should keep our bodies healthy. (1 Cor. 6:19-20)

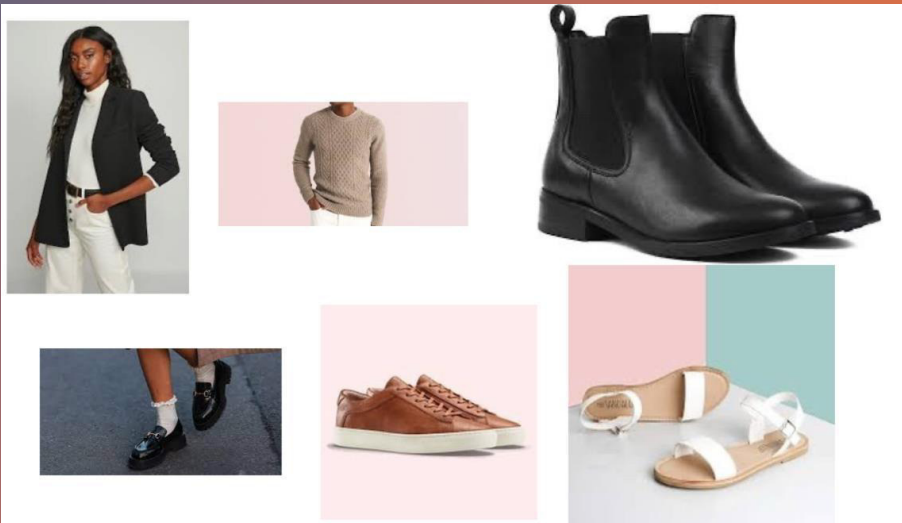
# Dress Code Guidelines

- All workers should maintain a neat and professional image at all times.
- Dress, whether traditional or casual, should be neat, clean, in good taste, and project a positive image of Christ Temple. All workers should use good judgment and follow the guidelines below in determining appropriate dress and grooming.
- Hairstyles, make-up and the grooming of beards and mustaches are to be left to the discretion of the worker. However, worker's personal grooming should contribute to a clean and neat appearance. Body cleanliness; use of deodorant.
- Appropriate undergarments must be worn.
- Well-groomed appearance with clean properly fitting clothing; garments should not be transparent. One's clothing should not cause distracting or disruptive attention or reaction on the part of others.
- Dresses and skirts should be no lower than right at the knees.
- Jewelry will be professional and in good taste.
- • Fragrances, perfumes, colognes, hairsprays are to be kept to a minimum as not to pose an environmental concern to others



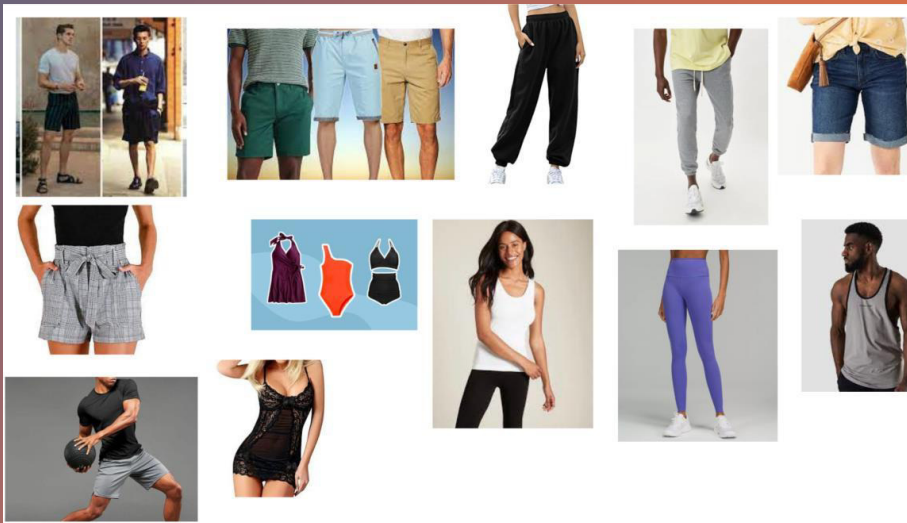
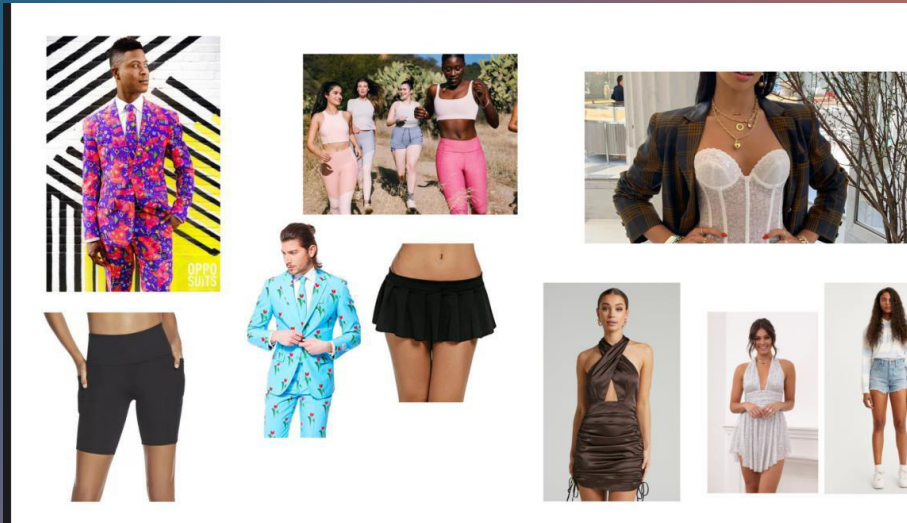
# Sunday Service Dress Code

- Workers during Sunday services and formal events need to project a professional businesslike image. As a general guide, workers are expected to dress in a manner that has been accepted by the general public as business wear in an establishment that provides professional services to the public.



# Unacceptable Attire

- All types of shorts; spandex pants and form fitting leggings; workout wear or beach wear; sweatshirts and/or t-shirts with offensive slogans or pictures; sweatpants; lingerie-like clothing; halter tops or dresses; tank tops without a jacket or sweater; dresses or skirts that are excessively short; sheer, see-through or clothing that is otherwise revealing, provocative, or distracting.





## Communication Skills

- Treat others the way you would like to be treated. Mark 12:31- Love your neighbor as yourself.
- Welcoming newcomers. 1 Cor. 16:14- Let everything you do be done in love (motivated and inspired by God's love for us).

## Punctuality & Accountability

- You are expected as workers to be punctual to every church service. In situations where this is not possible, you are expected to be accountable by notifying your leader.
- It is mandatory to attend all church meetings and activities. In the event that this is not possible, notify your leader.
- Attendance is required for the following: Sunday Services, Workers Meeting, Team Meetings, Early Morning Showers (EMS), CT on a Hill, Bible Study, Holy Ghost Meeting, Victory Night, Midnight Prayer Watch, House of Prayer

# Punctuality



**is not about  
being on time.  
It's basically about  
respecting your  
own commitments!**

# Team Building

<https://youtu.be/GXsRyJbnXEI?si=XzCL-CV-4eWkt3IO>

*“One finger cannot lift a pebble.”*

~ Hopi Proverb

Some things, no matter how simple they might appear, require the cooperation and help of others to accomplish. Even the smallest, lightest pebble cannot be lifted by a single finger, it needs help.

---





# Team Leaders Pitch